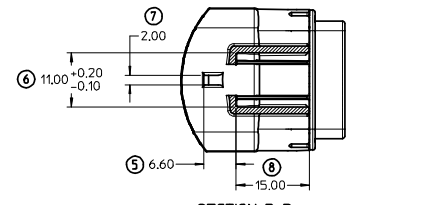
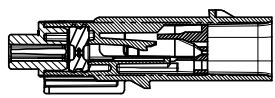
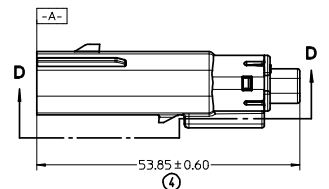
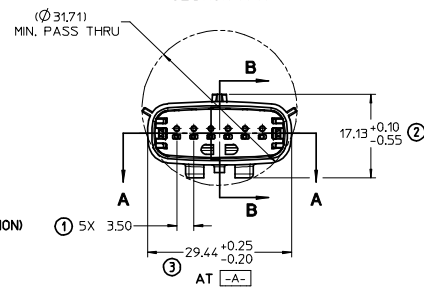
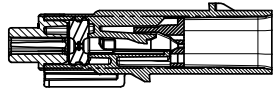
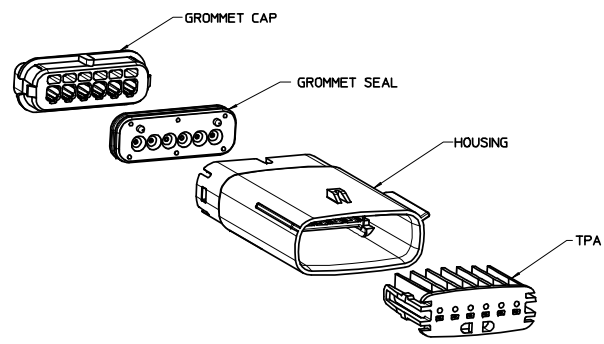
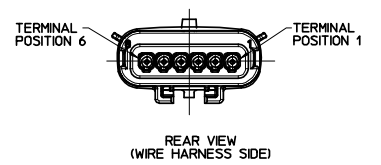
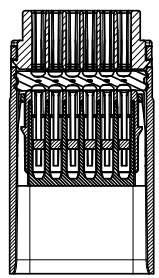
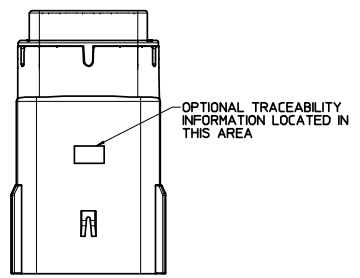
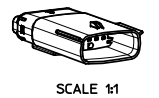
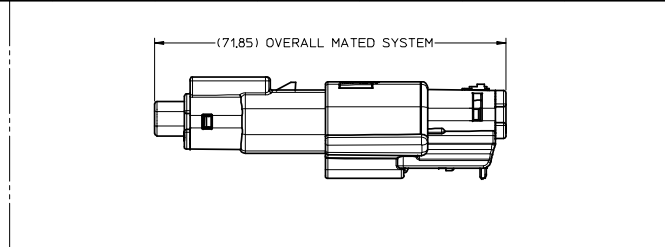
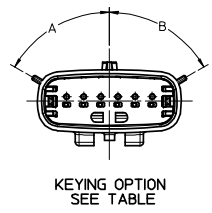


ASSEMBLY PART NUMBER	COLOR	KEYING OPTION	DIMENSIONS (DEGREES)		CAVITY TYPE & STATUS (X = PLUGGED)						
			A	B	1	2	3	4	5	6	
33481-0601	BLACK	A	60	60							
33481-0602	LT.GRAY	B	30	60							
33481-0603	BROWN	C	60	30							
33481-0604	GREEN	D	30	30							
33481-0605	CUSTOM	TBD									
33481-0606	BLACK	A	60	60						X	
33481-0607	LT.GRAY	B	30	60						X	
33481-0608	BROWN	C	60	30						X	
33481-0609	GREEN	D	30	30						X	
33481-0610	CUSTOM	TBD								X	
33481-0611	BLACK	A	60	60	X					X	
33481-0612	LT.GRAY	B	30	60	X					X	
33481-0613	BROWN	C	60	30	X					X	
33481-0614	GREEN	D	30	30	X					X	
33481-0615	CUSTOM	TBD			X					X	



- NOTES: UNLESS OTHERWISE SPECIFIED
- DESIGNED TO MATE WITH RECEPTACLE HOUSING ASSEMBLY SPECIFIED IN MOLEX CHARTED DRAWING SD-33471-061.
 - ASSEMBLY SHIPPED WITH BLADE INSERT IN PRE-LOCK POSITION (SEE SECTION D-D PRE-LOCK). UPON FULL TERMINAL ASSEMBLY, EACH BLADE INSERT MUST BE SNAPPED INTO ITS FINAL-LOCK POSITION.
 - FOR BLADE TERMINALS TO BE USED WITH THIS ASSEMBLY, SEE DRAWING SD-33000-001.
 - SYSTEM TO BE USED WITH WIRE WITHIN DIAMETER RANGE OF 1.5mm TO 2.5mm.
 - MATERIAL: SPS/NYLON BLEND, 20% GLASS FILLED.
 - CHENGDU ASSEMBLIES SHALL CONFORM TO PACKAGING SPECIFICATION PK-31300-635
 - SHALL CONFORM TO PRODUCT SPECIFICATION PS-33471-000.

INSPECTION NUMBER LOG
LAST NUMBER USED: 8
ADDED:
REMOVED:

REDRAWN EC NO: VAL2009-0021 DRAWN/CHKD CHEN/SYRZTL APPROV/KOSHY 2008/08/14 2008/08/19 2008/08/21	QUALITY SYMBOLS ▽=0 ▽=0	GENERAL TOLERANCES (UNLESS SPECIFIED) mm INCH		DIMENSION STYLE MM ONLY	SCALE 2:1	DESIGN UNITS METRIC	THIRD ANGLE PROJECTION
		4 PLACES ± --- 3 PLACES ± --- 2 PLACES ± 0.10 1 PLACE ± 0.3	--- --- --- ---	--- --- --- ---	DRAWN BY DMARCOUX DATE 06-14-02	CHECKED BY DGRIFFTH DATE 06-14-02	TITLE MX150 STANDARD CONNECTOR BLADE 1 ROW HOUSING, SEALED, 6 WAY
DRAFT WHERE APPLICABLE MUST REMAIN WITHIN DIMENSIONS		ANGULAR ± 3°		APPROVED BY FHOLUB DATE 06-14-02	MOLEX INCORPORATED		
MATERIAL NO. SEE CHART				DOCUMENT NO. SD-33481-061		SHEET NO. 1 OF 1	